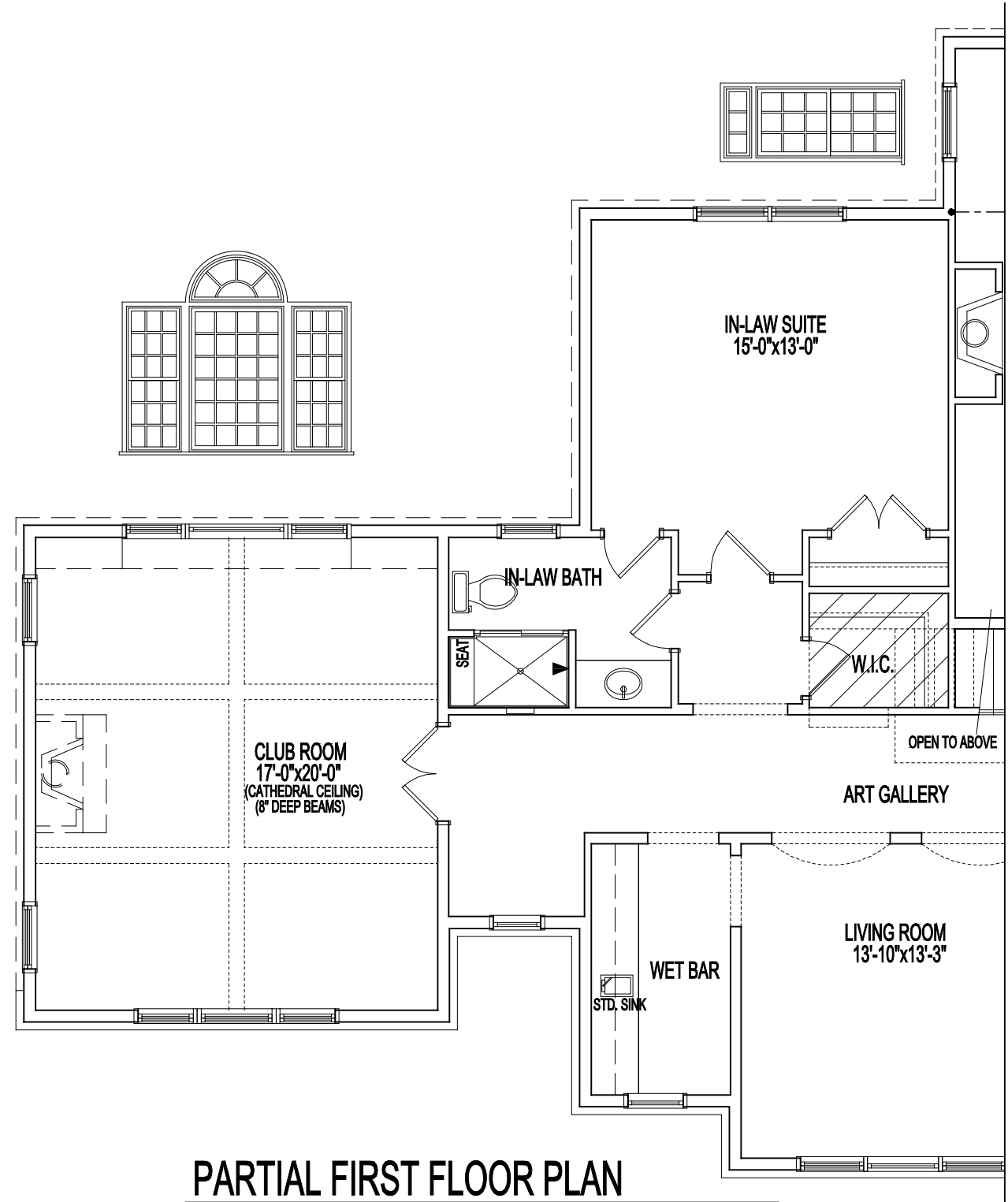
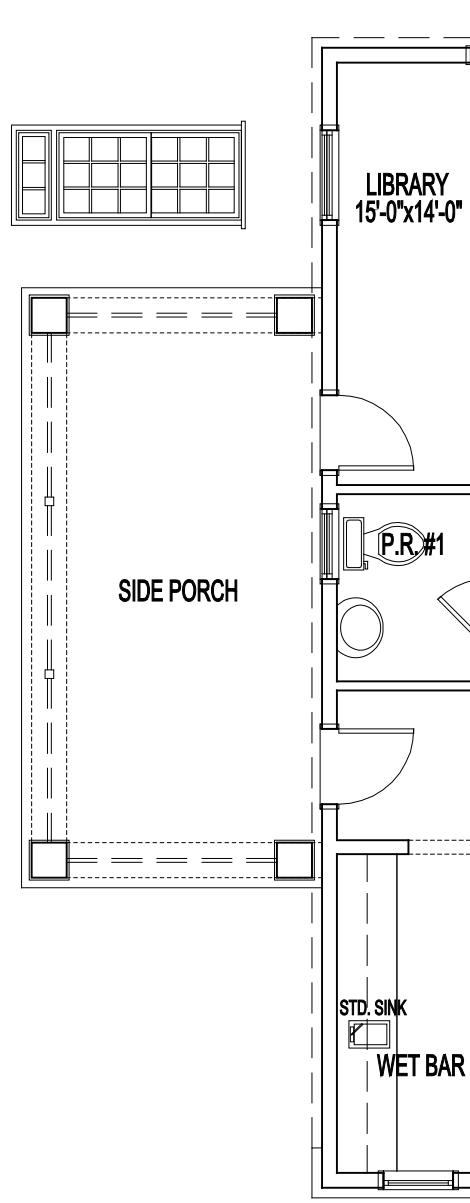


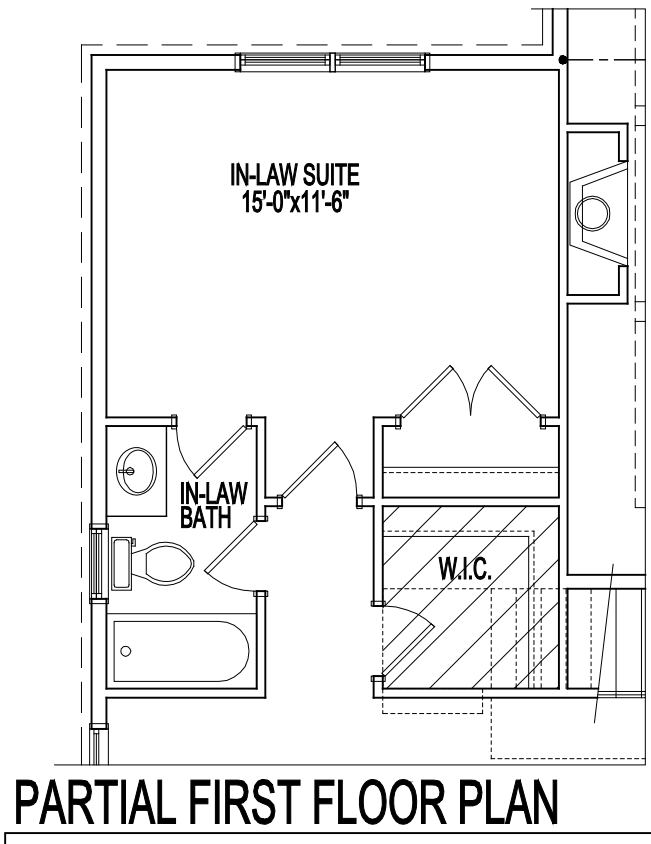
# BRAEBURN MANOR



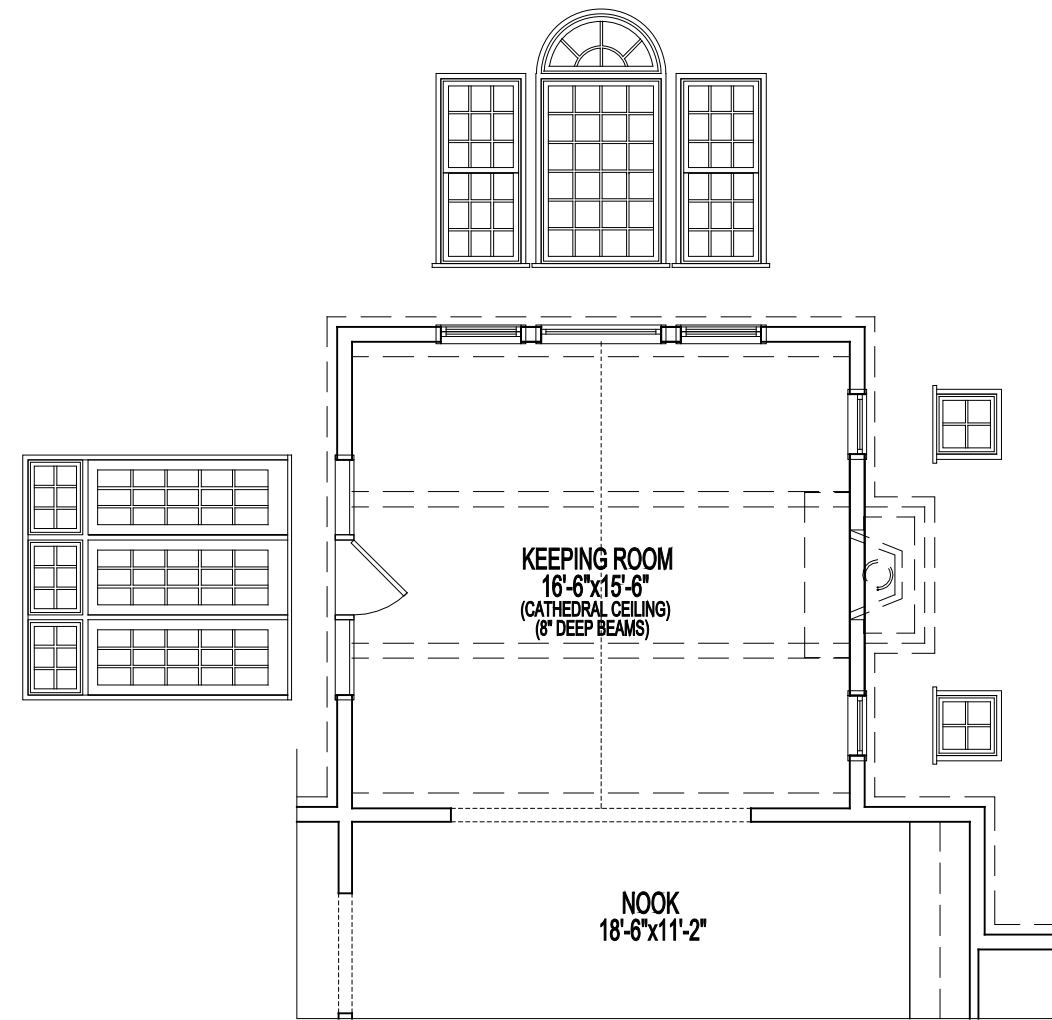
PARTIAL FIRST FLOOR PLAN  
W/ OPT. CLUB ROOM  
W/ OPT. IN-LAW SUITE  
04-08-20



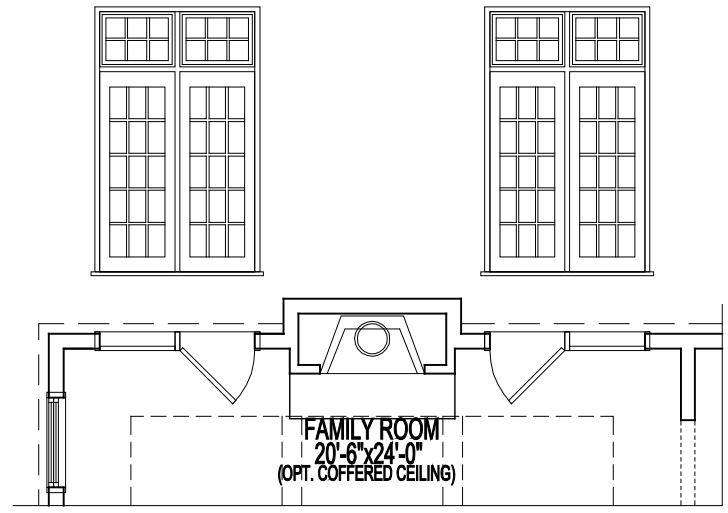
PARTIAL FIRST FLOOR PLAN  
W/ SIDE PORCH  
04-08-20



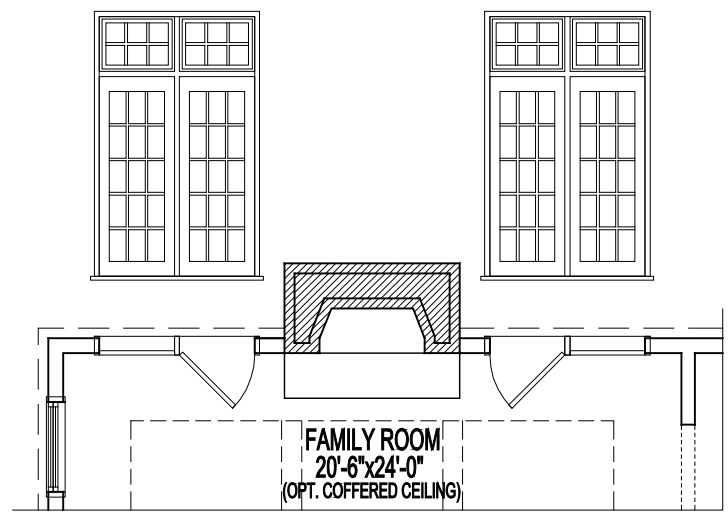
PARTIAL FIRST FLOOR PLAN  
W/ IN-LAW SUITE  
04-08-20



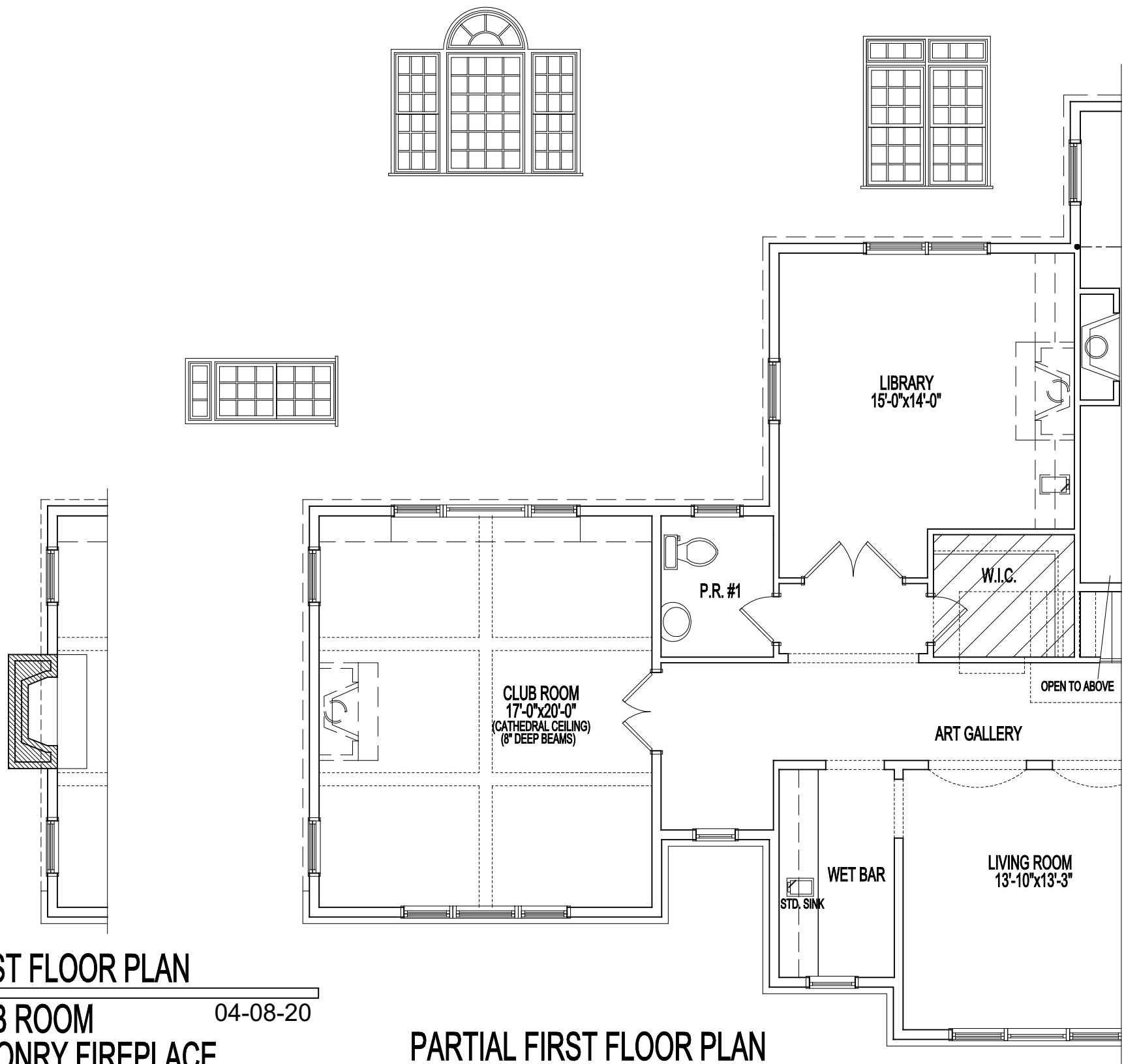
PARTIAL FIRST FLOOR PLAN  
W/ OPT. KEEPING ROOM  
04-08-20



PARTIAL FIRST FLOOR PLAN  
W/ OPT. FAMILY ROOM  
REAR FIREPLACE  
04-08-20



PARTIAL FIRST FLOOR PLAN  
W/ OPT. FAMILY ROOM  
REAR MASONRY FIREPLACE  
04-08-20



PARTIAL FIRST FLOOR PLAN  
W/ OPT. CLUB ROOM  
W/ OPT. MASONRY FIREPLACE  
04-08-20

PARTIAL FIRST FLOOR PLAN  
W/ OPT. CLUB ROOM  
04-08-20

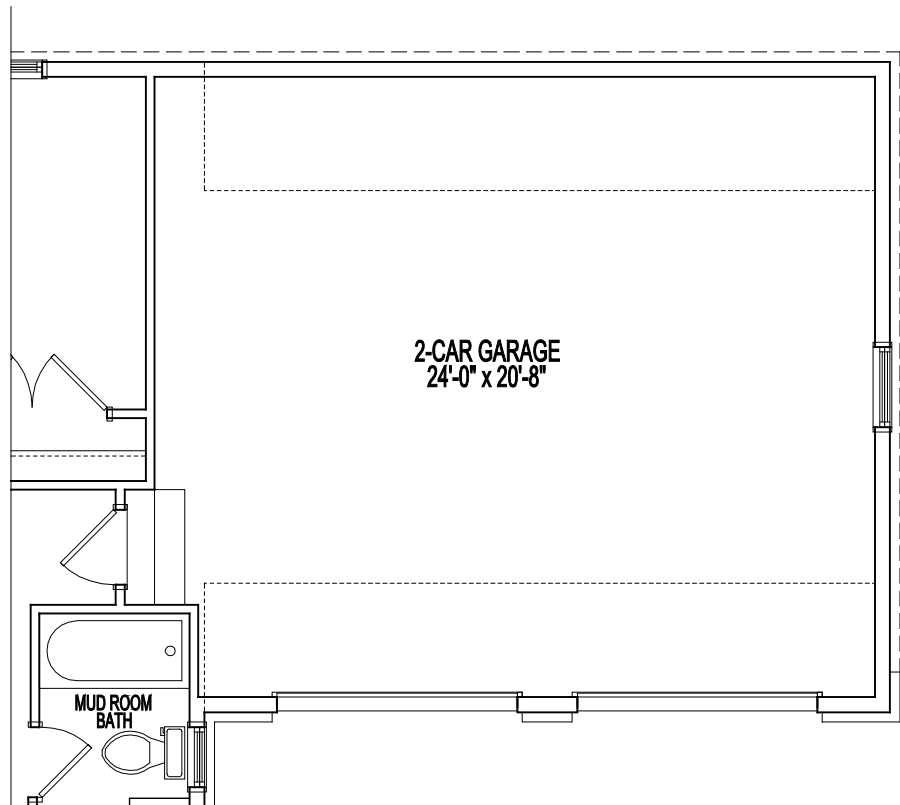


FIRST FLOOR PLAN  
04-08-20

## 10'-0" FIRST FLOOR CEILING HEIGHT

Each Carrington model and floor plan features art galleries to enhance the circulation of each home, state of the art custom kitchens, and high quality interior woodworking details including standard dentil and Greek key four piece crown moldings, plinth blocks, and arches (per plan). In addition to a broad choice of structural options, a Carrington Home can be further customized to suit your family's lifestyle and needs.

\*Blueprints take precedence over matrices.



PARTIAL FIRST FLOOR PLAN  
W/ OPT. 2-CAR FRONT LOAD GARAGE  
04-08-20



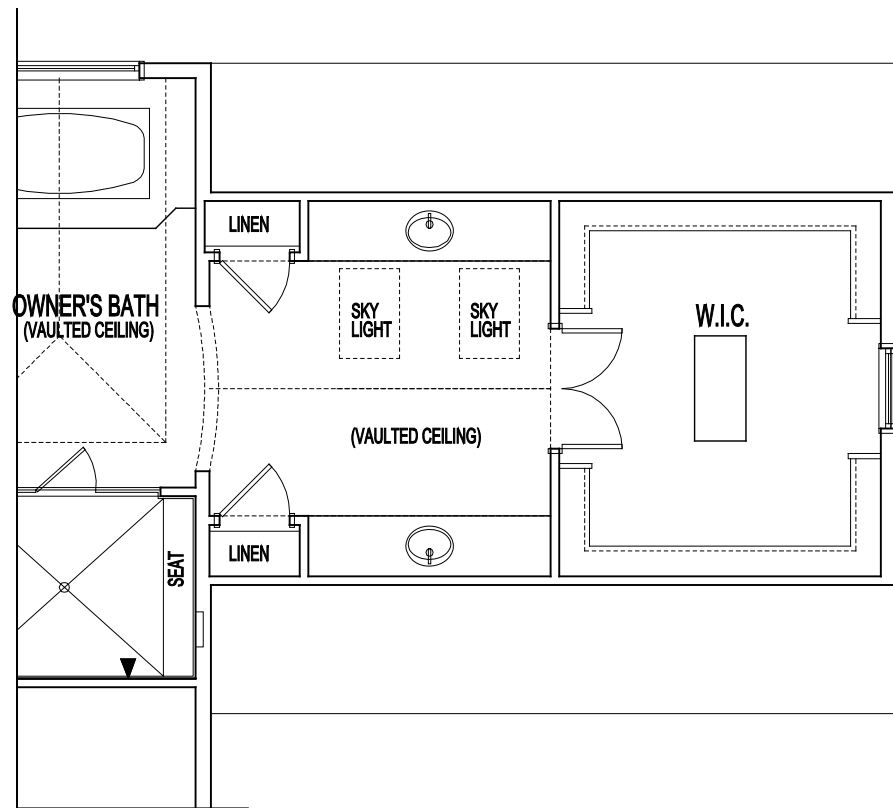
JAMES McDONALD ASSOCIATE ARCHITECTS PC

9909 GEORGETOWN PIKE, SUITE 204 GREAT FALLS, VIRGINIA 22066

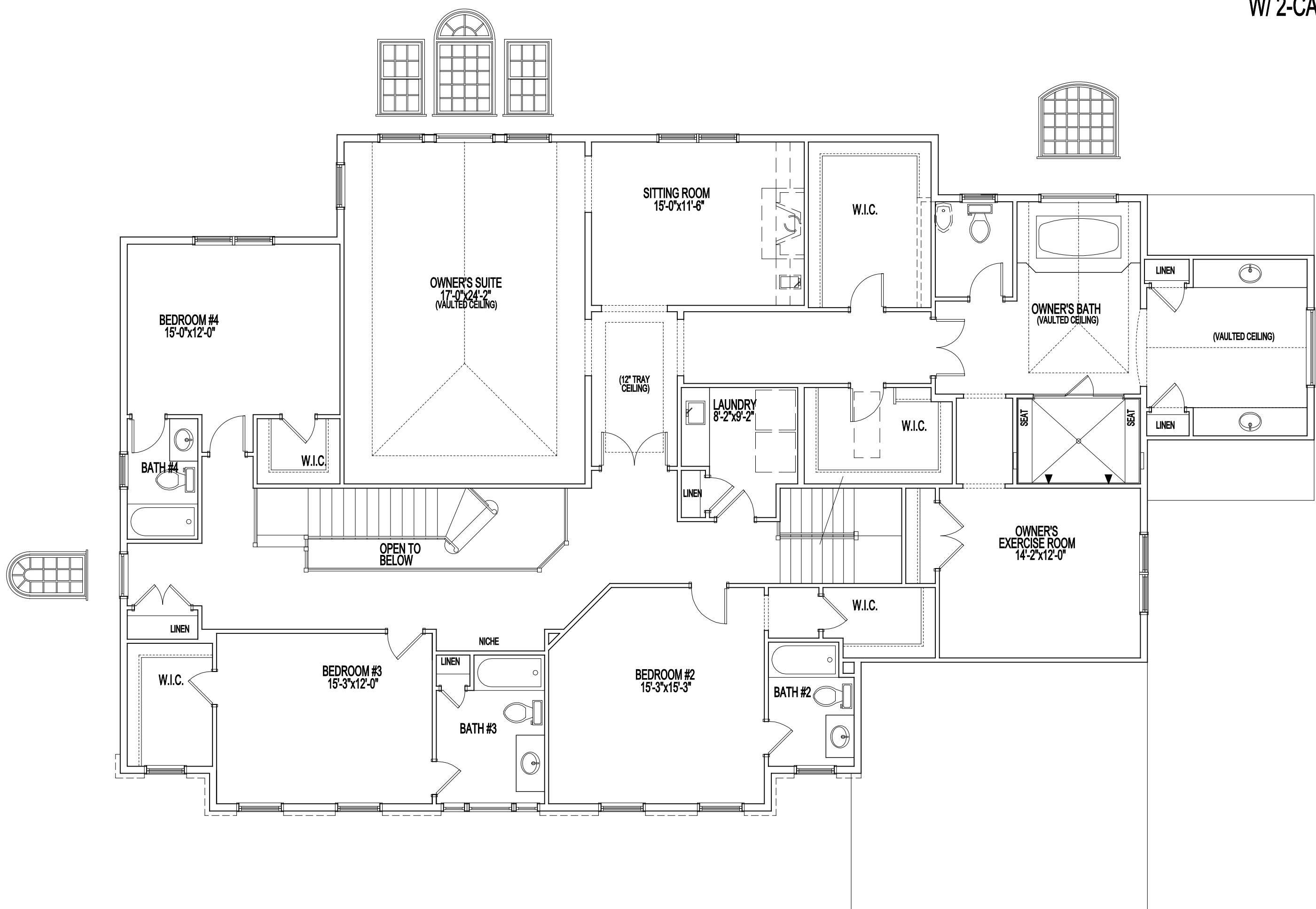
PH: 703-757-0036 FAX: 703-757-1211

© JAMES McDONALD ASSOCIATE ARCHITECTS IS EXPRESSLY REQUESTING ITS COMMERCIAL  
COPYRIGHT AND OTHER PROPERTY RIGHTS IN THESE PLANS. THESE PLANS ARE NOT TO BE  
REPRODUCED, COPIED, OR USED IN ANY FORM OR MANNER WITHOUT OUR WRITTEN  
PERMISSION AND CONSENT OF JAMES McDONALD ASSOCIATE ARCHITECTS PC

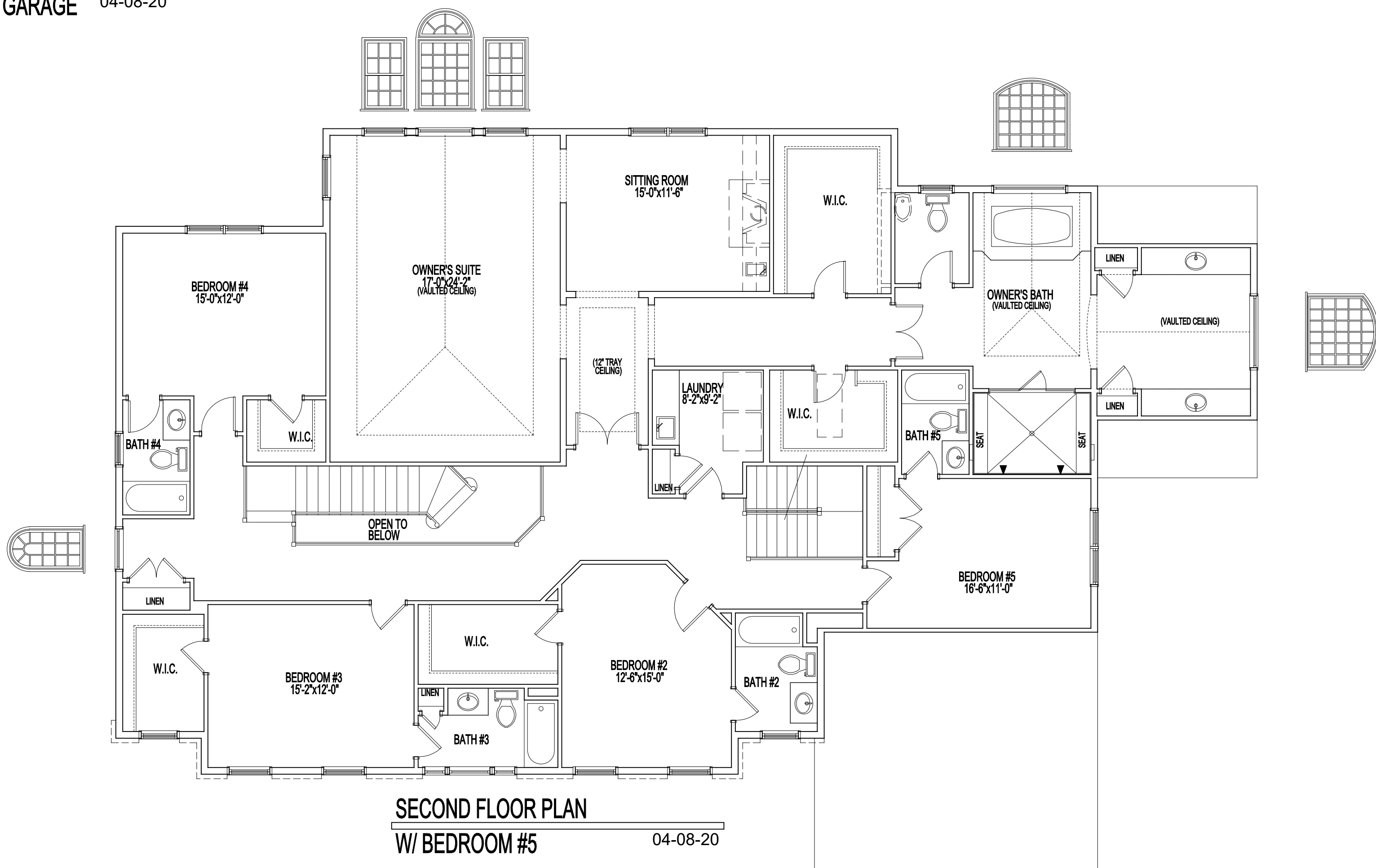
# BRAEBURN MANOR



SECOND FLOOR PLAN  
W/ 2-CAR FRONT LOAD GARAGE 04-08-20



SECOND FLOOR PLAN  
04-08-20



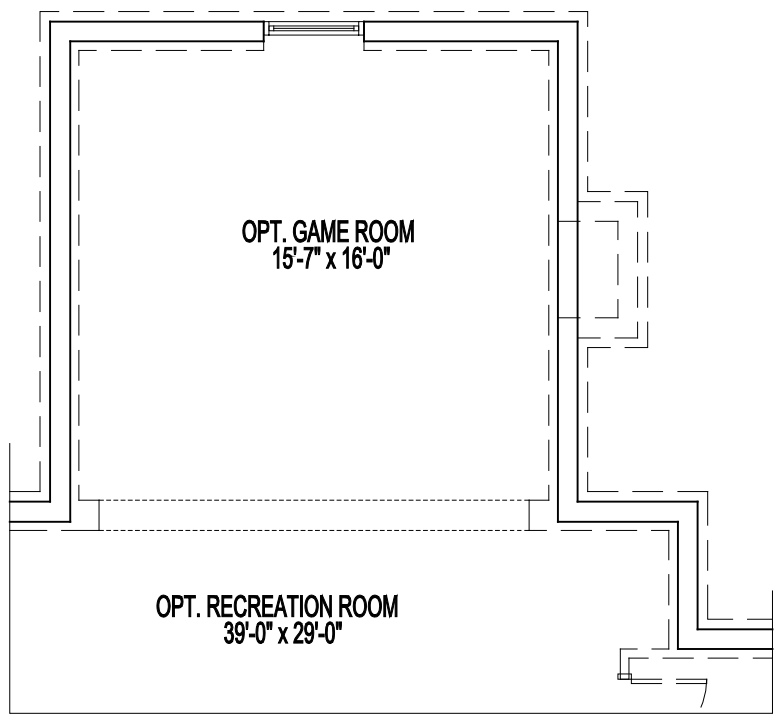
SECOND FLOOR PLAN  
W/ BEDROOM #5 04-08-20

## 9'-0" SECOND FLOOR CEILING HEIGHT

Each Carrington model and floor plan features art galleries to enhance the circulation of each home, state of the art custom kitchens, and high quality interior woodworking details including standard dentil and Greek key four piece crown moldings, plinth blocks, and arches (per plan). In addition to a broad choice of structural options, a Carrington Home can be further customized to suit your family's lifestyle and needs.

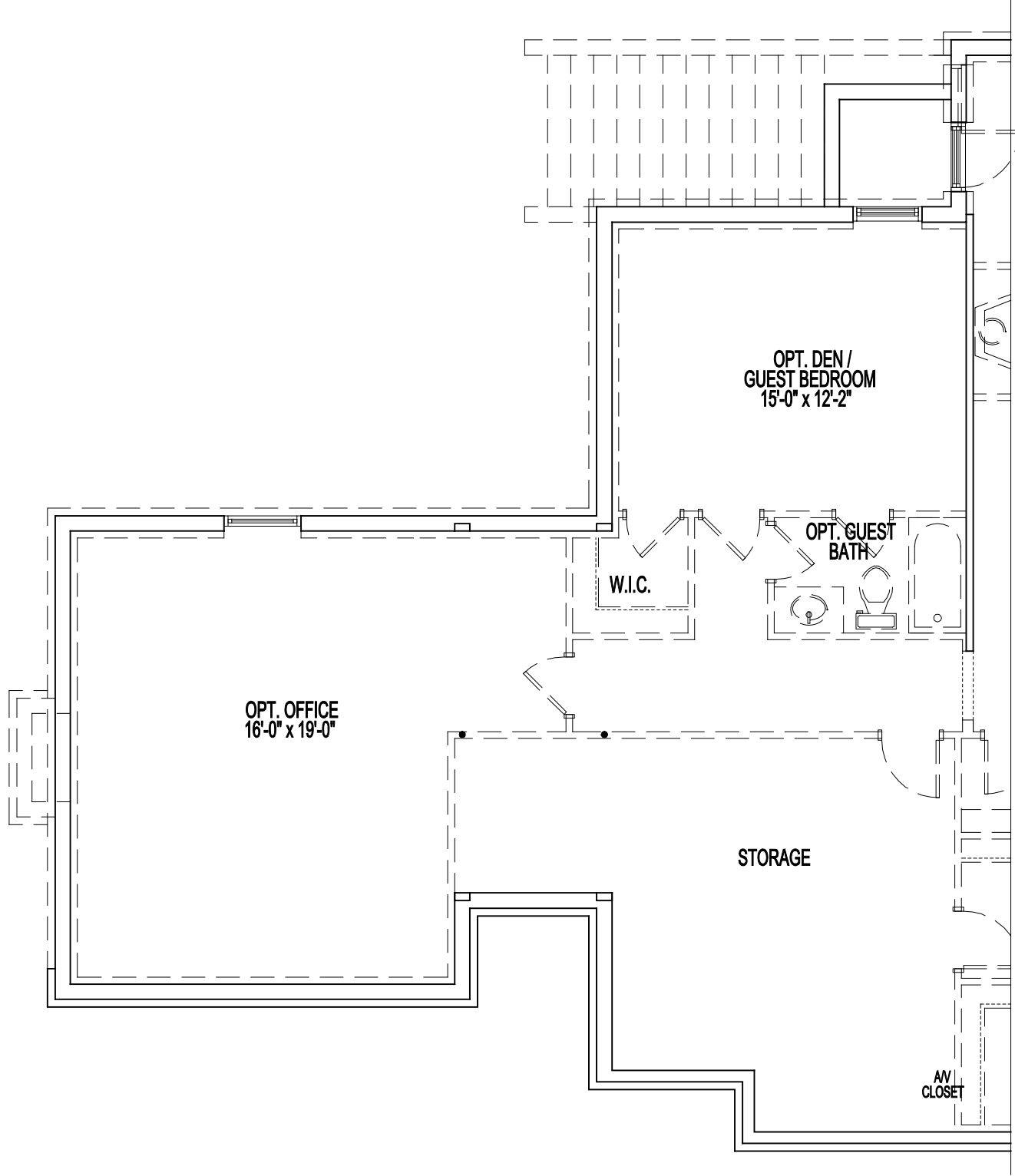
\*Blueprints take precedence over matrices.

# BRAEBURN MANOR



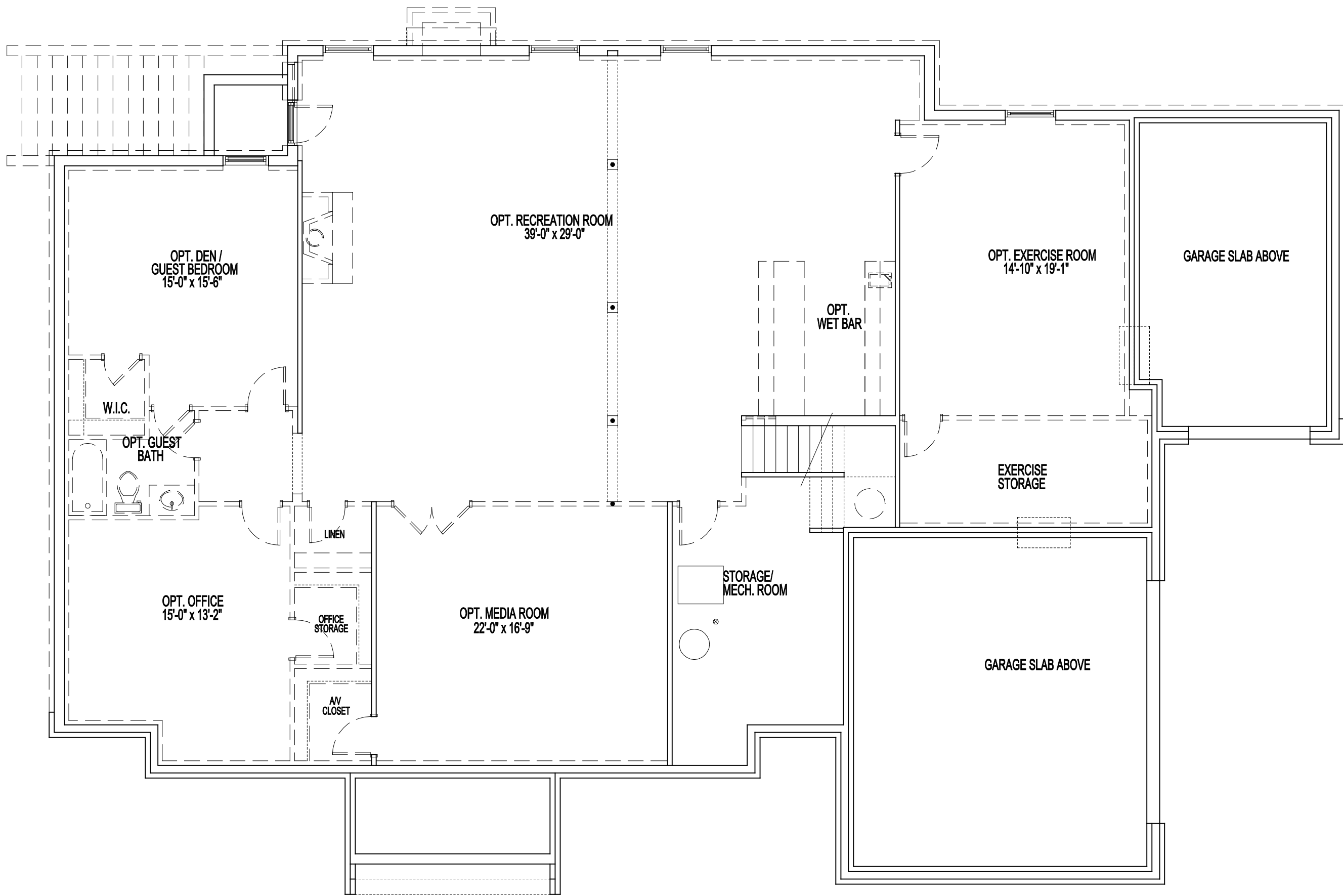
PARTIAL FOUNDATION / BASEMENT PLAN  
W/ KEEPING ROOM

04-08-20



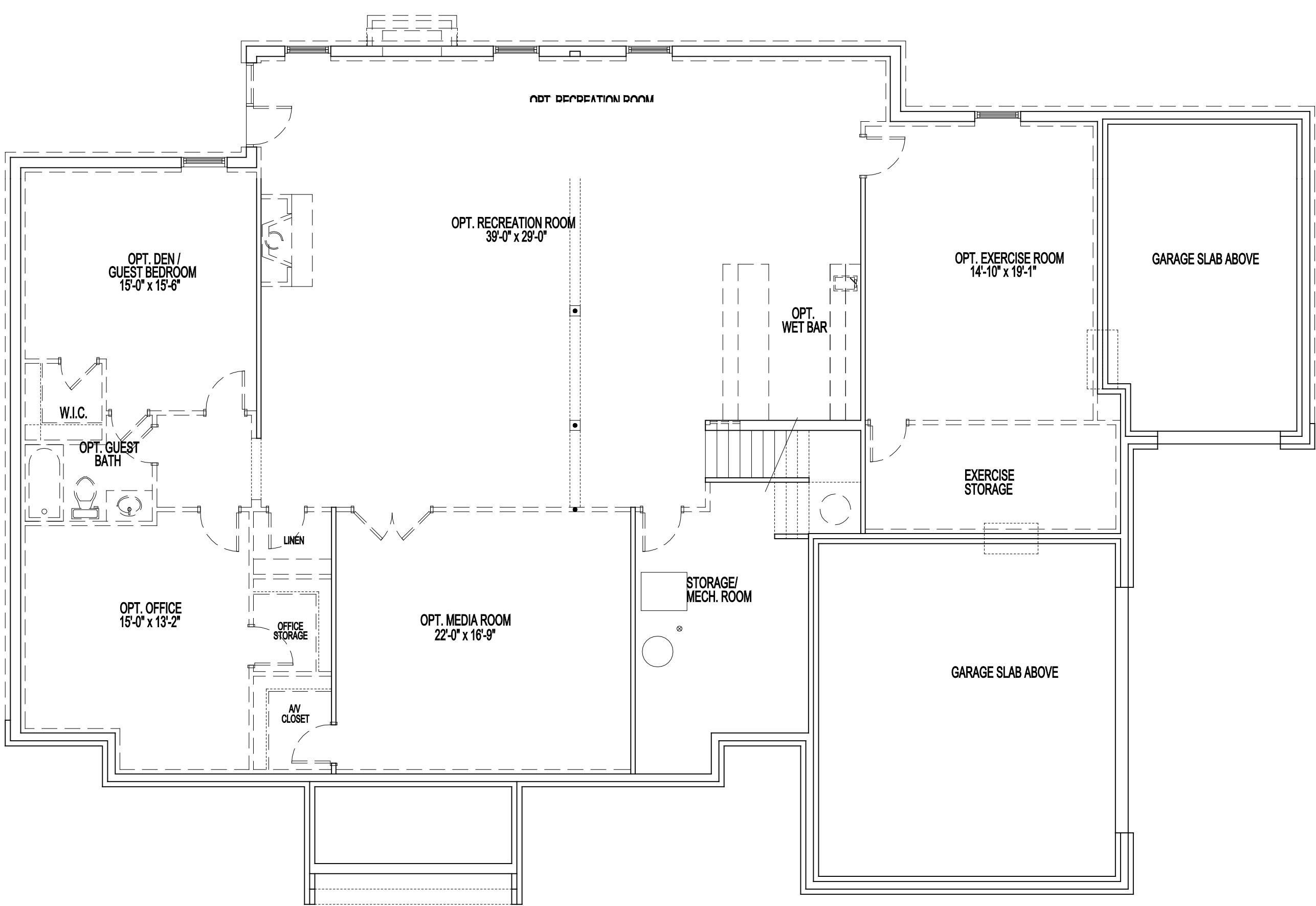
PARTIAL FOUNDATION / BASEMENT PLAN  
W/ CLUB ROOM

04-08-20



FOUNDATION / BASEMENT PLAN

04-08-20



FOUNDATION / BASEMENT PLAN  
W/ WALKOUT

04-08-20

## 9'-0" BASEMENT CEILING HEIGHT

Each Carrington model and floor plan features art galleries to enhance the circulation of each home, state of the art custom kitchens, and high quality interior woodworking details including standard dentil and Greek key four piece crown moldings, plinth blocks, and arches (per plan). In addition to a broad choice of structural options, a Carrington Home can be further customized to suit your family's lifestyle and needs.

\*Blueprints take precedence over matrices.



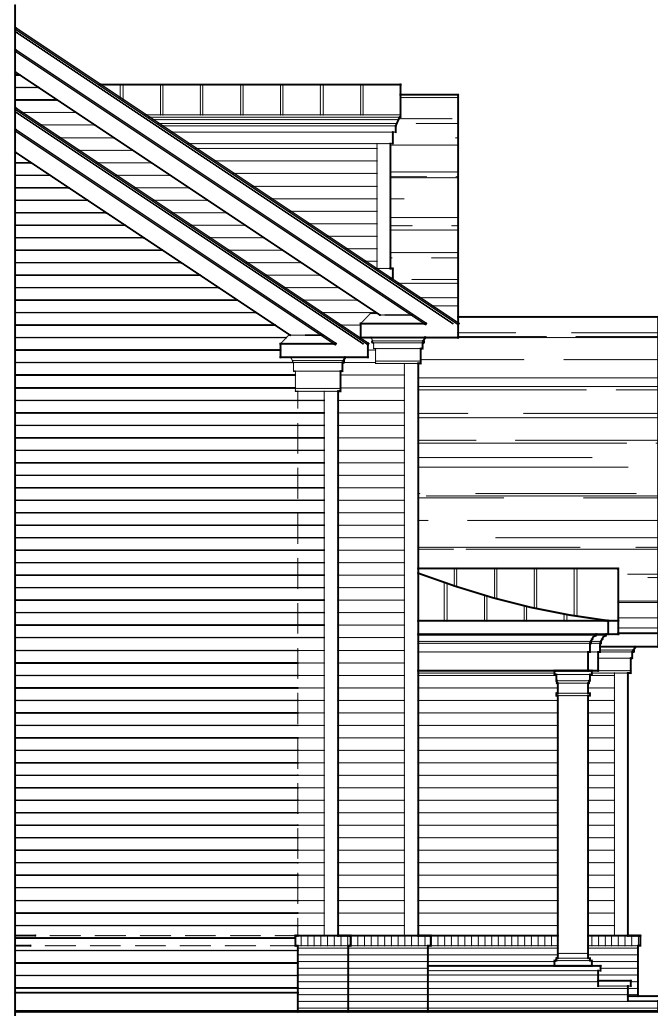
JAMES McDONALD ASSOCIATE ARCHITECTS PC  
9909 GEORGETOWN PIKE, SUITE 204 GREAT FALLS, VIRGINIA 22066  
PH: 703-757-0036 FAX: 703-757-1211

© JAMES McDONALD ASSOCIATE ARCHITECTS IS EXPRESSLY NOTED TO THE COMMUNITY  
COPYRIGHT AND OTHER PROPERTY RIGHTS IN THESE PLANS. THESE PLANS ARE NOT TO BE  
REPRODUCED OR COPIED IN ANY FORM OR BY ANY MEANS, WITHOUT THE WRITTEN  
PERMISSION AND CONSENT OF JAMES McDONALD ASSOCIATE ARCHITECTS PC

# BRAEBURN MANOR



FRONT ELEVATION  
ELEVATION #1A 04-08-20



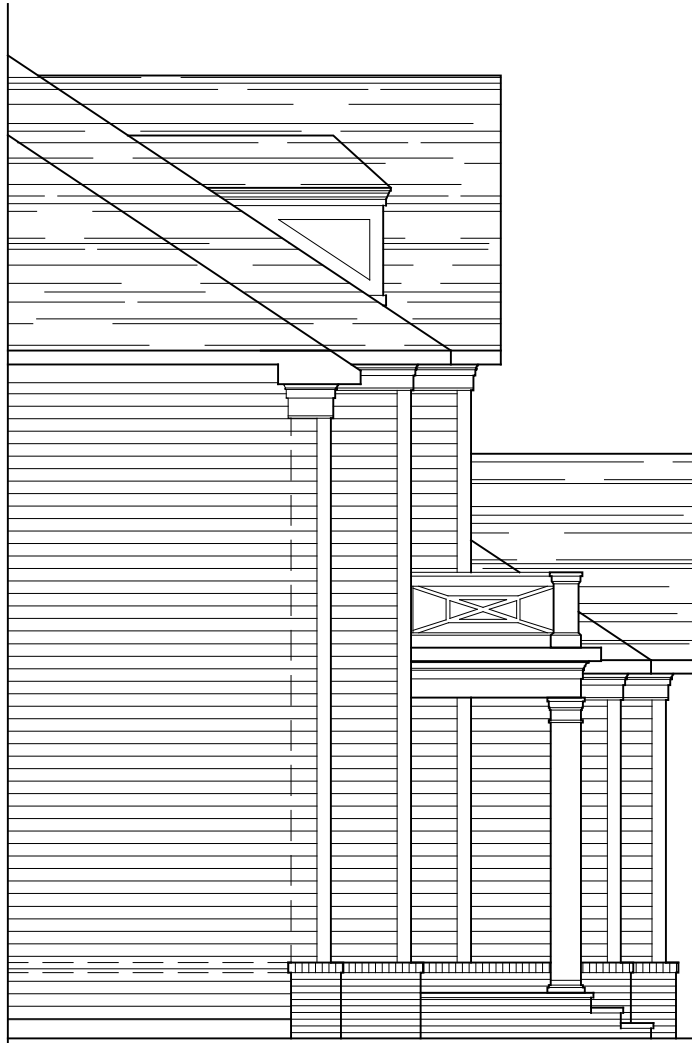
PARTIAL LEFT SIDE ELEVATION  
ELEVATION #1A 04-08-20



FRONT ELEVATION  
ELEVATION #1B 04-08-20



FRONT ELEVATION  
ELEVATION #2B 04-08-20



PARTIAL LEFT SIDE ELEVATION  
ELEVATION #2B 04-08-20

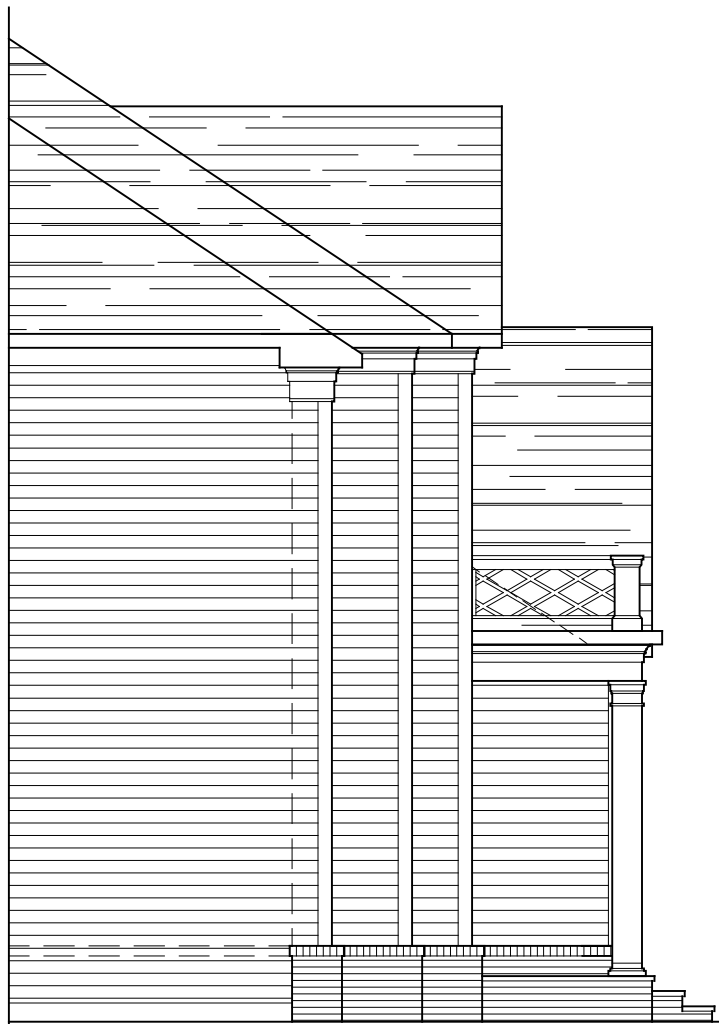
Carrington exteriors feature the best elements from the Colonial Revival Period (1920-1940) of American architecture. Each Carrington home has many exteriors to choose from and feature quality Cushwa molded oversized brick, Hardiplank siding, and quarry stone accents all designed to create an architecturally pleasing and animated community streetscape with lasting value.

\*Blueprints take precedence over matrices.

# BRAEBURN MANOR



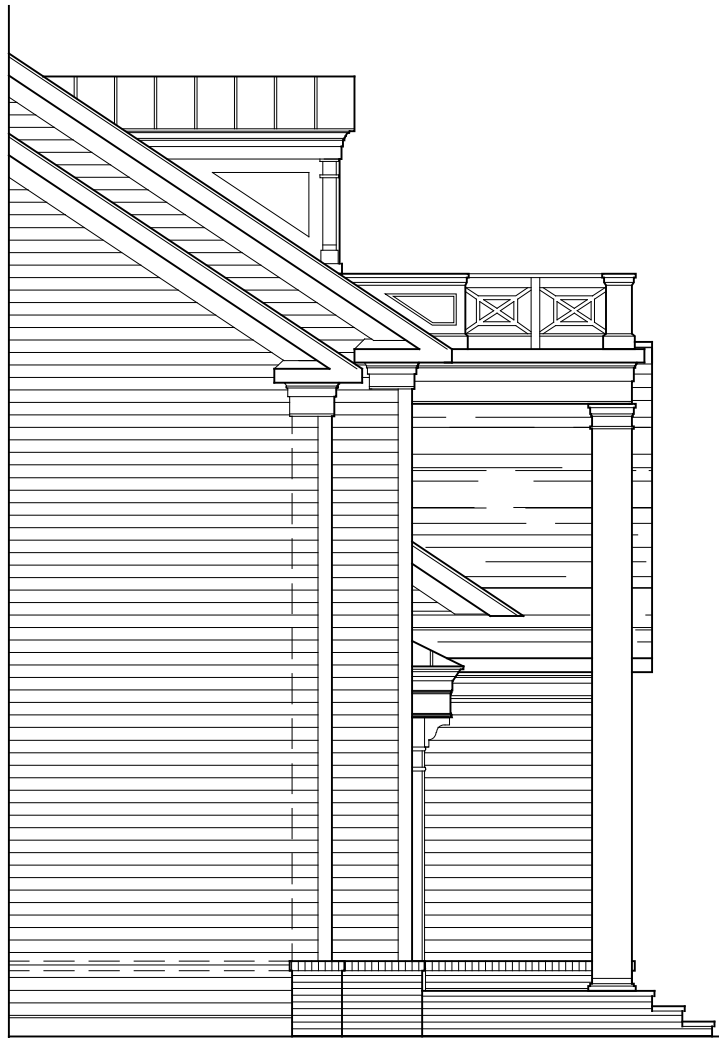
FRONT ELEVATION  
ELEVATION #3B 04-08-20



PARTIAL LEFT SIDE ELEVATION  
ELEVATION #3B 04-08-20



FRONT ELEVATION  
ELEVATION #4B 04-08-20



PARTIAL LEFT SIDE ELEVATION  
ELEVATION #4B 04-08-20

Carrington exteriors feature the best elements from the Colonial Revival Period (1920-1940) of American architecture. Each Carrington home has many exteriors to choose from and feature quality Cushwa molded oversized brick, Hardiplank siding, and quarry stone accents all designed to create an architecturally pleasing and animated community streetscape with lasting value.

\*Blueprints take precedence over matrices.



# BRAEBURN MANOR



FRONT ELEVATION  
ELEVATION #1A W/ STONE & SIDING 04-08-20



FRONT ELEVATION  
ELEVATION #1B W/STONE & SIDING 04-08-20



FRONT ELEVATION  
ELEVATION #2B W/ BRICK 04-08-20

ALL CARRINGTON ELEVATIONS ARE AVAILABLE  
W/ BRICK FRONT ELEVATIONS (SEE SALES  
ASSOCIATE FOR FURTHER DETAILS)



FRONT ELEVATION  
ELEVATION #2B W/ STONE & SIDING 04-08-20

Carrington exteriors feature the best elements from the Colonial Revival Period (1920-1940) of American architecture. Each Carrington home has many exteriors to choose from and feature quality Cushwa molded oversized brick, Hardiplank siding, and quarry stone accents all designed to create an architecturally pleasing and animated community streetscape with lasting value.

\*Blueprints take precedence over matrices.

# BRAEBURN MANOR



FRONT ELEVATION  
ELEVATION #2B  
W/ 2-CAR FRONT LOAD GARAGE 04-08-20



FRONT ELEVATION  
ELEVATION #2B  
W/ CLUB ROOM 04-08-20



FRONT ELEVATION  
ELEVATION #2B  
W/ CLUB ROOM  
W/ 2-CAR FRONT LOAD GARAGE 04-08-20



FRONT ELEVATION  
ELEVATION #2B  
W/ SIDE PORCH 04-08-20

Carrington exteriors feature the best elements from the Colonial Revival Period (1920-1940) of American architecture. Each Carrington home has many exteriors to choose from and feature quality Cushwa molded oversized brick, Hardiplank siding, and quarry stone accents all designed to create an architecturally pleasing and animated community streetscape with lasting value.

\*Blueprints take precedence over matrices.